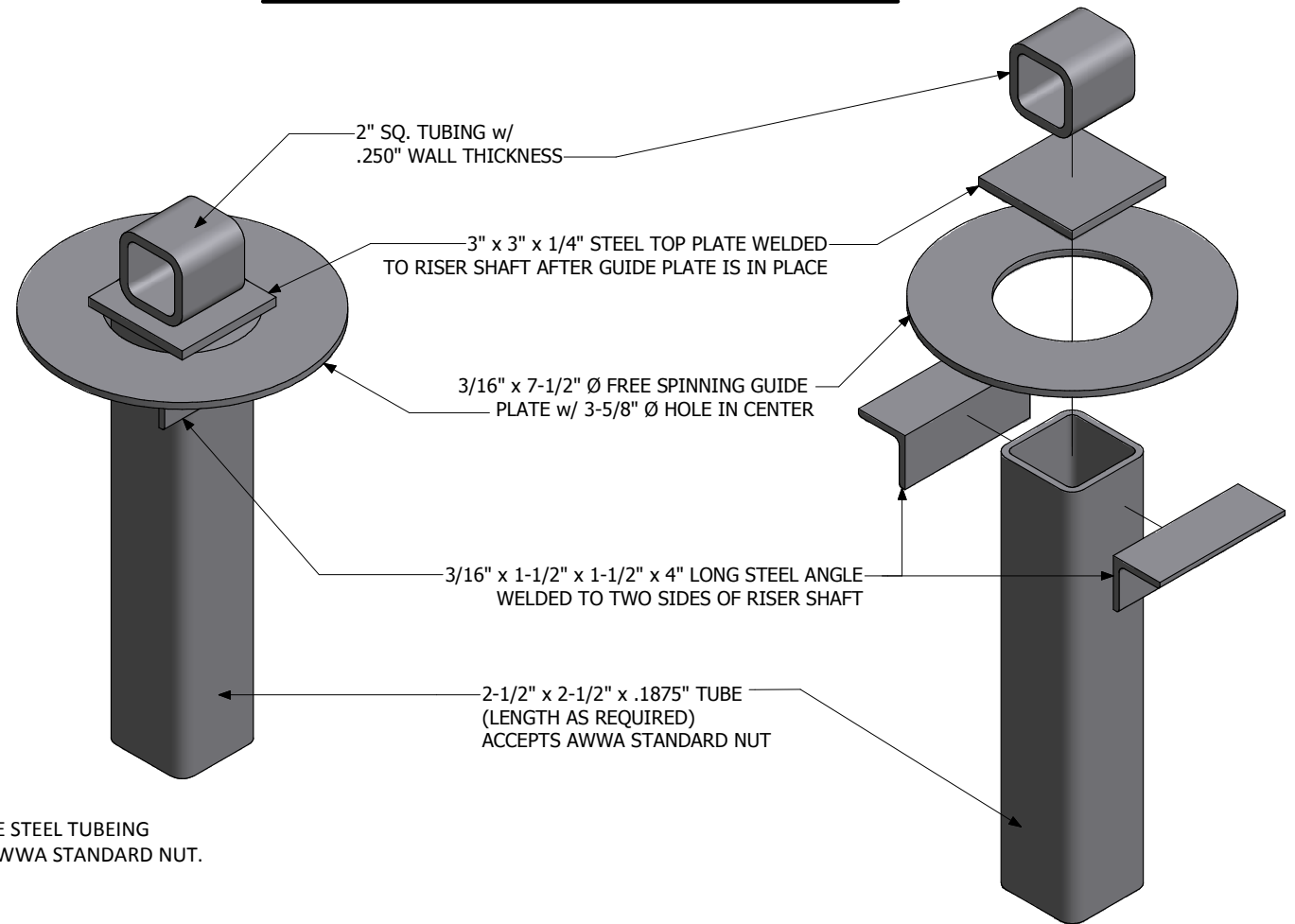




1325 Furneaux Road, Plumas Lakes, CA. 95961
 (530) 742-9675
www.placerwaterworks.com

VALVE STEM EXTENSIONS CITY OF SANTA ROSA



NOTES:

1. VALVE STEM EXTENSION LENGTH TO BE DETERMINE.
2. FREE SPIN 3/16" x 7-1/2" Ø CENTERING RING.
3. VALVE STEM EXTENSION MATERIALS TO BE 2-1/2" x .188" SQUARE STEEL TUBEING
4. VALVE STEM EXTENSION TO HAVE OPERATOR NUT AND ACCEPT AWWA STANDARD NUT.
5. ALL PARTS TO BE POWDER COATED BLACK.
6. ALL WELDING ARE DONE PER AWS SPECIFICATIONS.

CAT#: VALVE STEM EXTENSION : PW/VESR - CITY OF SANTA ROSA

COPYRIGHTED 2014 PLACER WATERWORK, INC. © ALL RIGHTS RESERVED - FOR DUPLICATION AUTHORIZATION MAY OBTAIN THRU: kkern@placerwaterworks.com

*** CB: R.V. 10-06-2014 REV.01