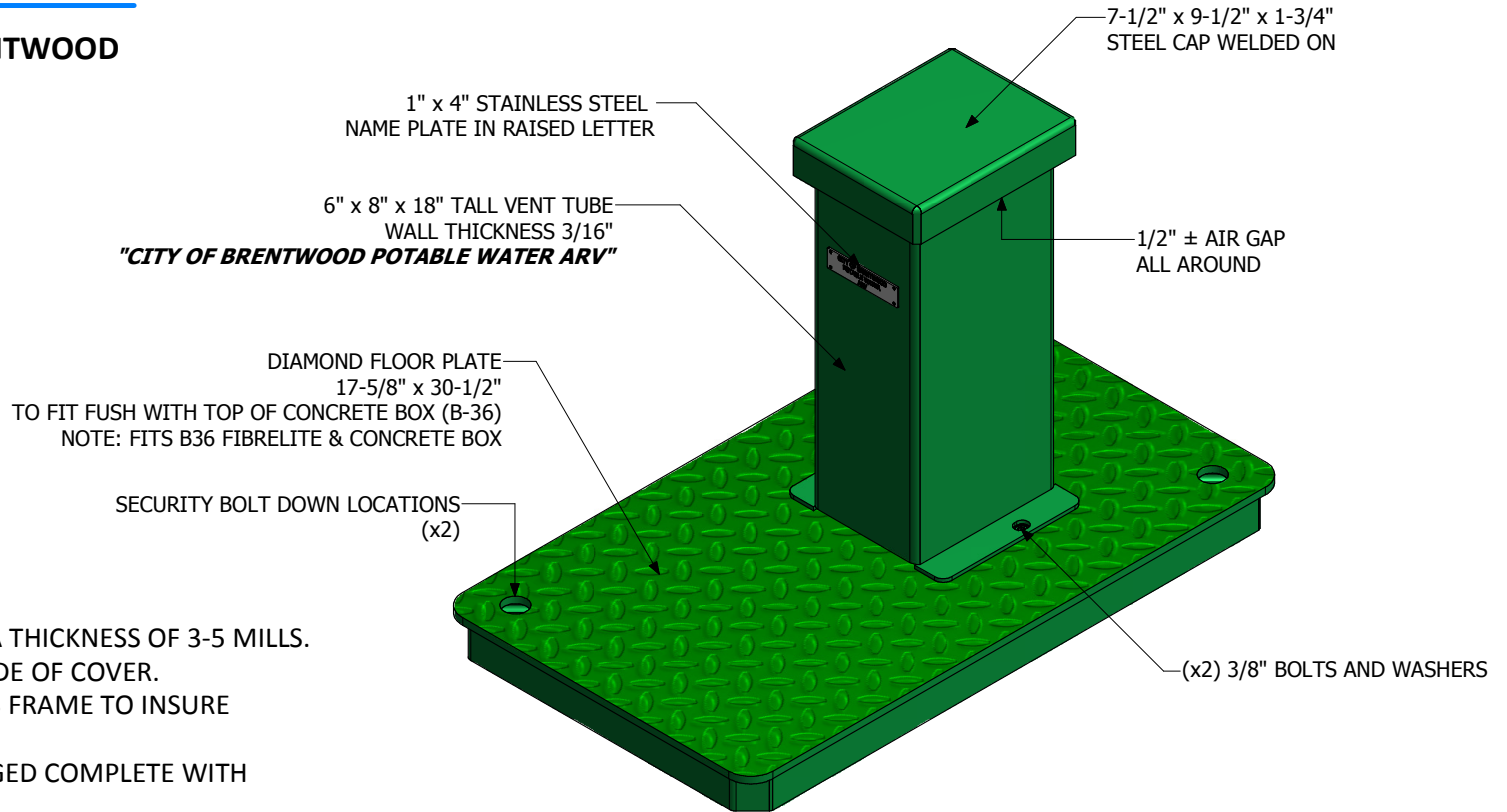




1325 Furneaux Road, Plumas Lakes, CA. 95961
 (530) 742-9675
www.placerwaterworks.com

ARV ENCLOSURE 2 PIECE TUBE & COVER PW/AE3618-MB

STANDARD FOR CITY OF BRENTWOOD



NOTES:

1. ALL PARTS ARE POWDER COATED TO A THICKNESS OF 3-5 MILLS.
2. LOCK NUTS WELDED TO THE UNDERSIDE OF COVER.
3. 3/16" x 1-3/4" FLAT BAR CONTINUOUS FRAME TO INSURE COVER TO REMAIN FLAT.
4. STEEL COVER IS INDIVIDUALLY PACKAGED COMPLETE WITH FASTENING BOLTS DOWN.
5. VENT TUBE IS INDIVIDUALLY PACKAGED AND COMES WITH FASTENERS BOLTS AND WASHERS.
6. ALL WELDING DONE PER AWS SPECIFICATIONS.

CAT#: PW/AE3618-MB (STANDARD FOR CITY OF BRENTWOOD)

COPYRIGHTED 2015 PLACER WATERWORK, INC. © ALL RIGHTS RESERVED - FOR DUPLICATION AUTHORIZATION MAY OBTAIN THRU: kkern@placerwaterworks.com

SHEET 1 OF 1

CB: K.K. 01-20-2015 REV.03